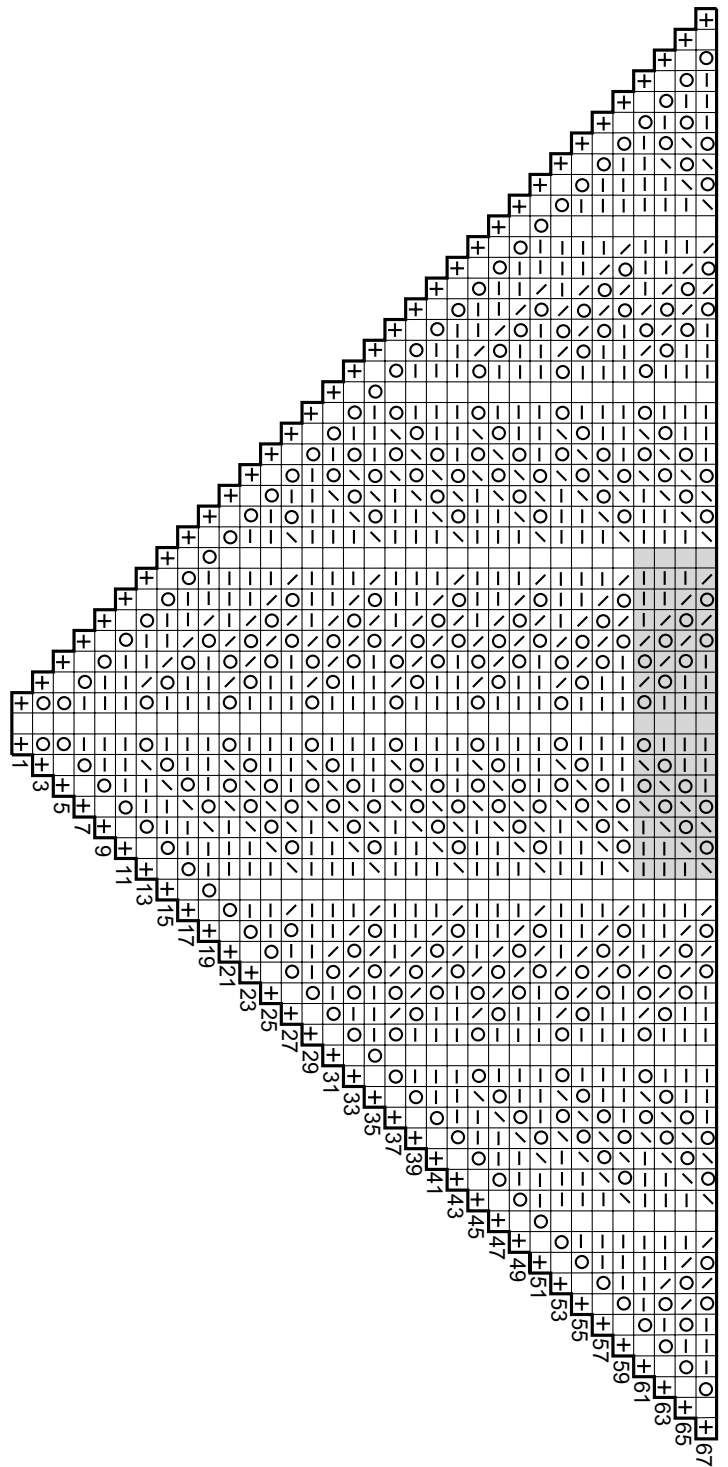


MODEL OF THE MONTH

from Filati Lino 02



SHAWL · SHADES OF COTTON LINEN

Size 204 cm wide x 113 cm long

Materials: 200 g of Lana Grossa **Shades of Cotton Linen** (70% cotton, 30% linen; 840 m/ 200 g) in Grey-Blue/ Grey/Light Grey/Natural (**col 703**). Size 4.5 mm needles.

Arrow lace: Work according to chart. Numbers at right edge of chart indicate RS rows; on WS rows, work sts as they appear, p all yos. Work rows 1 – 68

once, then rep rows 37 – 68, continuing to work incs as established. Patt rep is shown in grey on chart.

Gauge: 14 sts and 25 rows = 10 x 10 cm in arrow lace on size 4.5 mm needles.

Instructions: With size 4.5 mm needles cast on 3 sts. Work arrow lace according to chart for 284 rows = approx. 113 cm. Bind off all sts.

Finishing: Pin piece to measurements and block.



Chart key:

- ⊕ = selvage st
- = k1
- ⊖ = p1
- ⊗ = yo
- ⊠ = k2tog
- ⊞ = skp: sl 1 kwise, k1, pass slipped st over knitted st

For better readability, turn chart 90° counterclockwise

More at www.lanagrossa.de